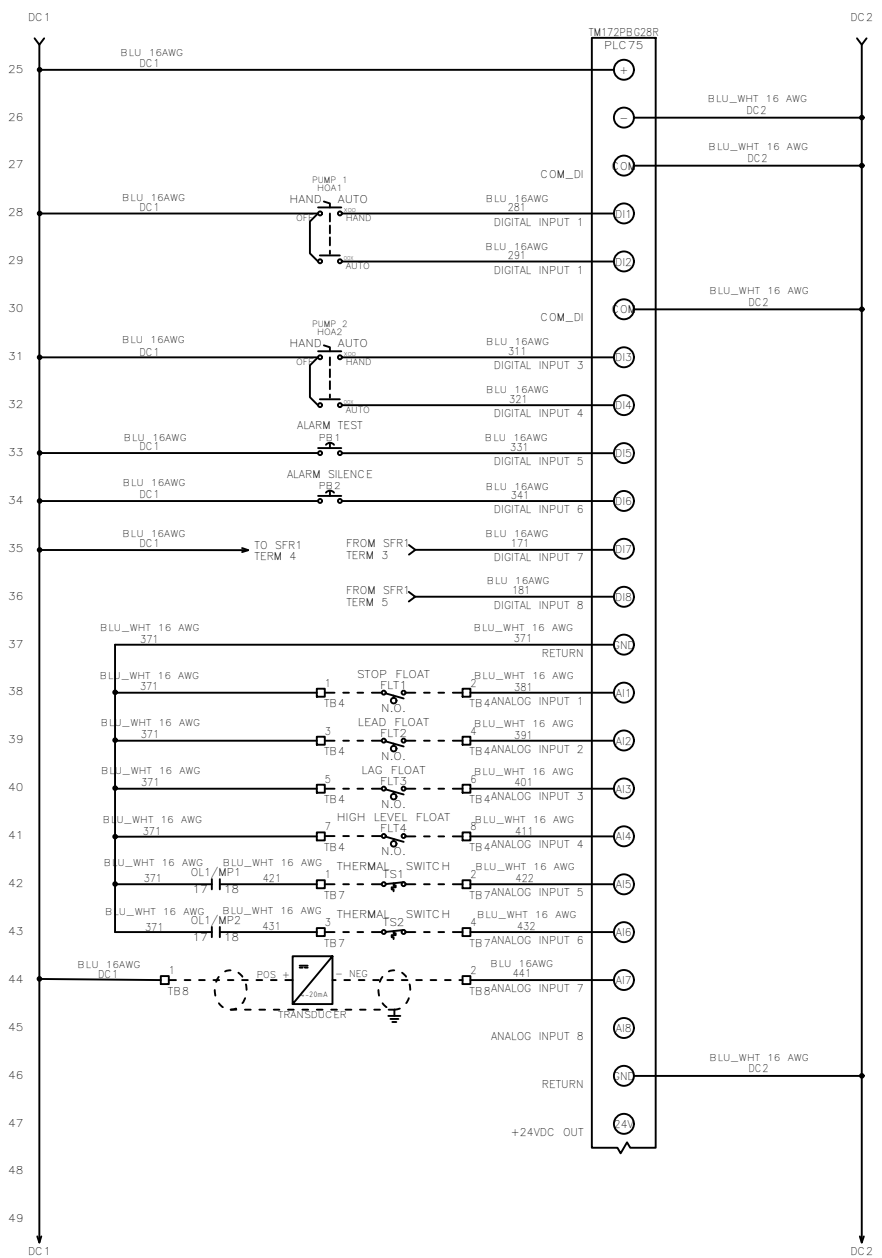
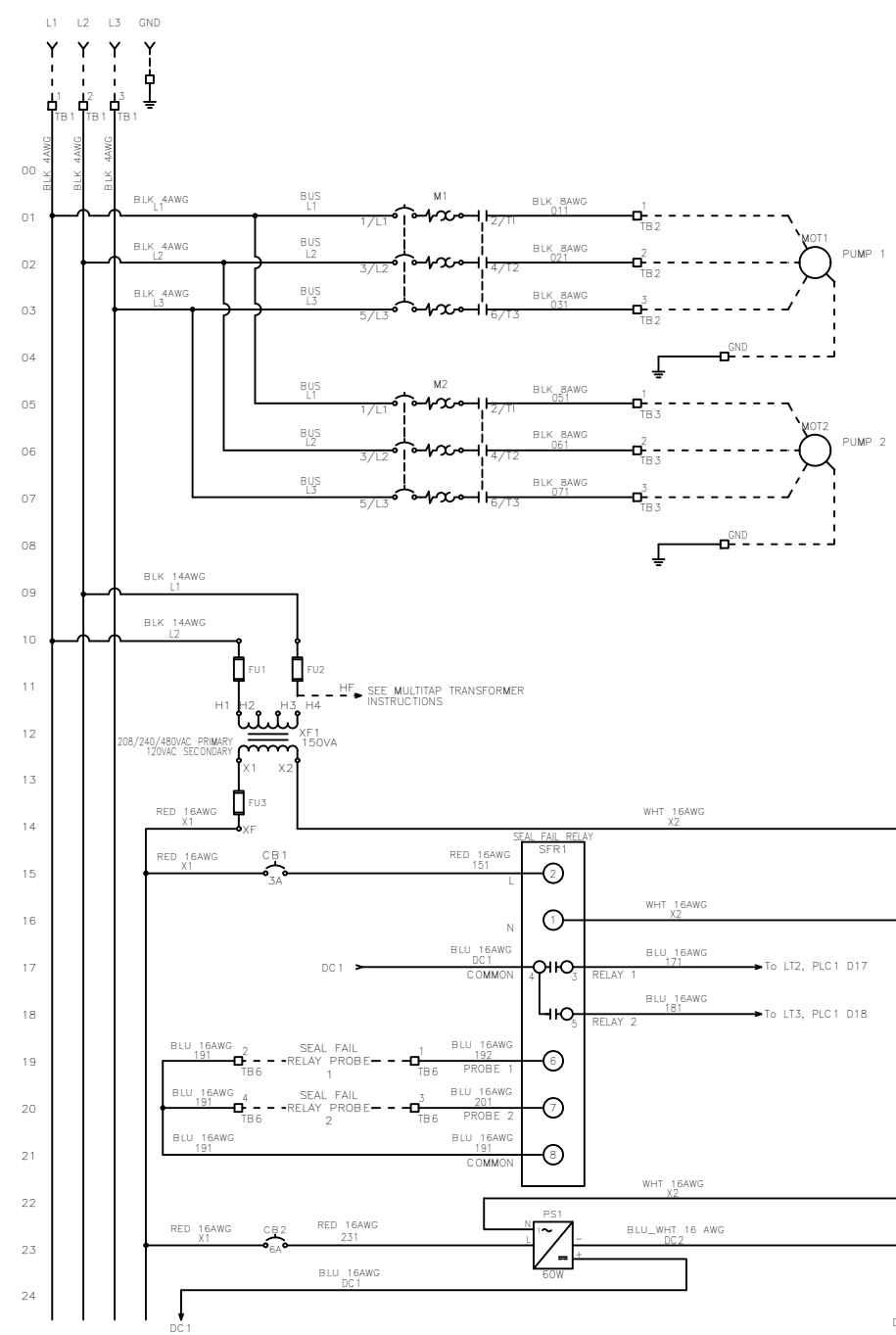


FILENAME: TRD-T32

REVDATE: 0321

| REVISIONS |     |                            |        |          |
|-----------|-----|----------------------------|--------|----------|
| ZONE      | REV | DESCRIPTION                | DATE   | APPROVED |
|           | B   | UPDATED ETM1 & ETM2 WIRING | 3/4/21 | JED      |



**MULTI-TAP TRANSFORMER:**  
 CONNECT FACTORY TAGGED WIRES TO APPROPRIATE TRANSFORMER VOLTAGE TAP. SEE BELOW FOR CONNECTIONS:  
 FOR 208V OPERATION, CONNECT TO FUSE INPUT HF & TO TRANSFORMER TAP H2.  
 FOR 240V OPERATION, CONNECT TO FUSE INPUT HF & TO TRANSFORMER TAP H3.  
 FOR 480V OPERATION, CONNECT TO FUSE INPUT HF & TO TRANSFORMER TAP H4.

----- DASHED LINE INDICATES FIELD WIRING.  
 USE COPPER CONDUCTORS ONLY.  
 TEMPERATURE RATING OF CONDUCTORS IS TO BE:  
 60°C (140°F) FOR UNDER 100A.  
 75°C (167°F) FOR OVER 100A.  
 BRANCH CIRCUIT PROTECTION SHALL BE PROVIDED BY THE INSTALLER: MUST BE SIZED ACCORDING TO PUMP/MOTOR MANUFACTURING SPECIFICATIONS.  
 VERIFY CORRECT OPERATION OF CONTROL PANEL AFTER INSTALLATION IS COMPLETE.

| FIELD WIRING TORQUE SPECS. |           |
|----------------------------|-----------|
| TERMINAL BLOCK UT 2,5      | 5 IN-LB   |
| TERMINAL BLOCK UT 4        | 7 IN-LB   |
| TERMINAL BLOCK UT 6        | 15 IN-LB  |
| TERMINAL BLOCK UT 10       | 15 IN-LB  |
| TERMINAL BLOCK UT 16       | 25 IN-LB  |
| TERMINAL BLOCK UT 35       | 30 IN-LB  |
| TS1, TS2, J2 & J3 PCB      | 5 IN-LB   |
| TRANSFORMER H1F, H2F & H3F | 15 IN-LB  |
| TRANSFORMER H1, H2 & H3    | 10 IN-LB  |
| DS1 VLS3P16-63 R1          | 16 IN-LB  |
| DS1 VLS3P63-125 R2         | 45 IN-LB  |
| DS1 LK4JU3CN 100A          | 36 IN-LB  |
| DS1 LK4MU3N 200A           | 200 IN-LB |
| M1/ M2 T1, T2 & T3         | 15 IN-LB  |

|                        |                                     |
|------------------------|-------------------------------------|
| UL #:                  | E320866                             |
| TOTAL FLA:             | 26 A                                |
| LARGEST MOT. FLA       | 12 A                                |
| VOLTAGE:               | 208/240/480 VAC                     |
| PHASE:                 | 3 PH                                |
| FREQUENCY:             | 60 Hz                               |
| ENCLOSURE TYPE:        | NEMA 3R                             |
| SHORT CIRCUIT CURRENT: | 5KA RMS SYMMETRICAL<br>600V MAXIMUM |

DRAWN BY: JED  
 DATE: 8/28/20  
 APPROVED BY: KM  
 DATE: 8/28/20  
 THIS DRAWING CONTAINS PROPRIETARY INFORMATION AND SHALL NOT BE USED OR DISCLOSED WITHOUT PRIOR WRITTEN AUTHORIZATION.

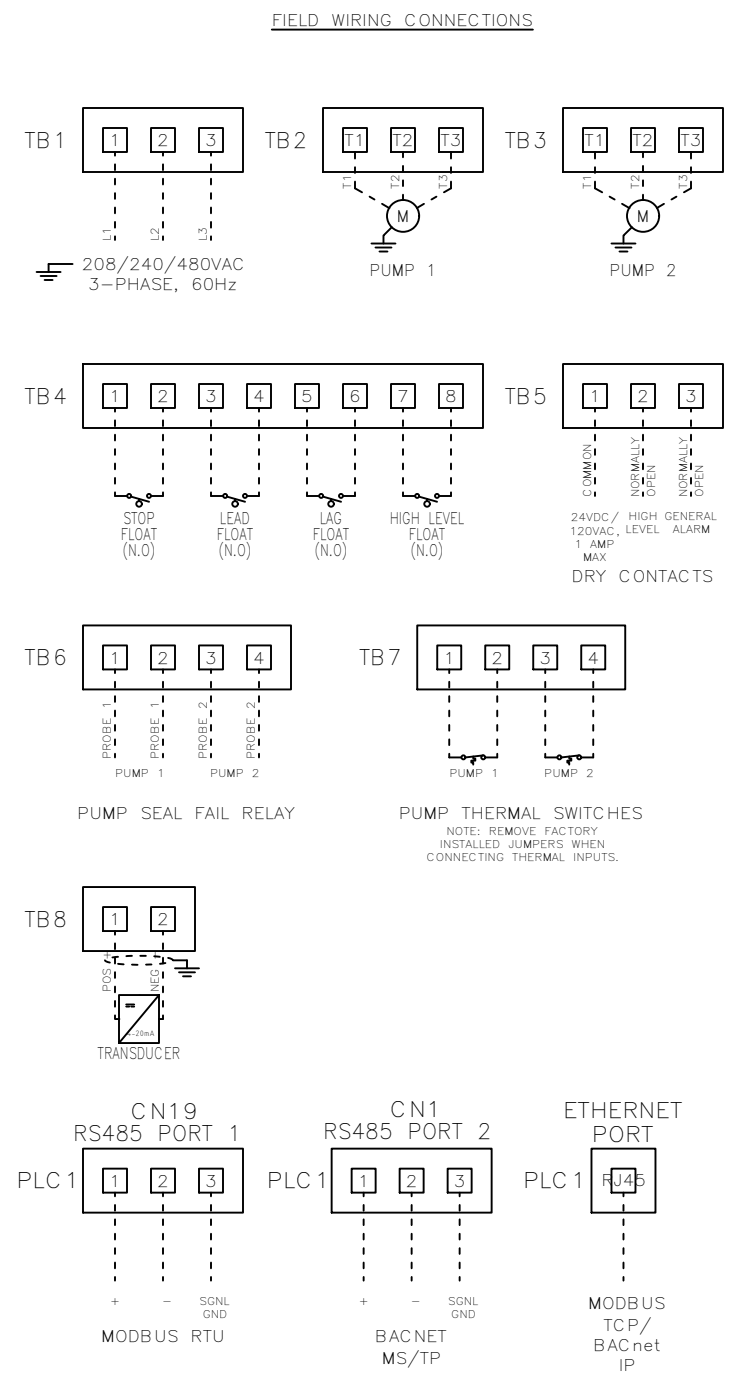
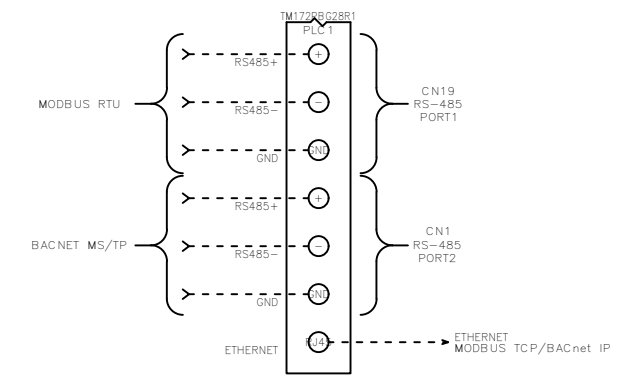
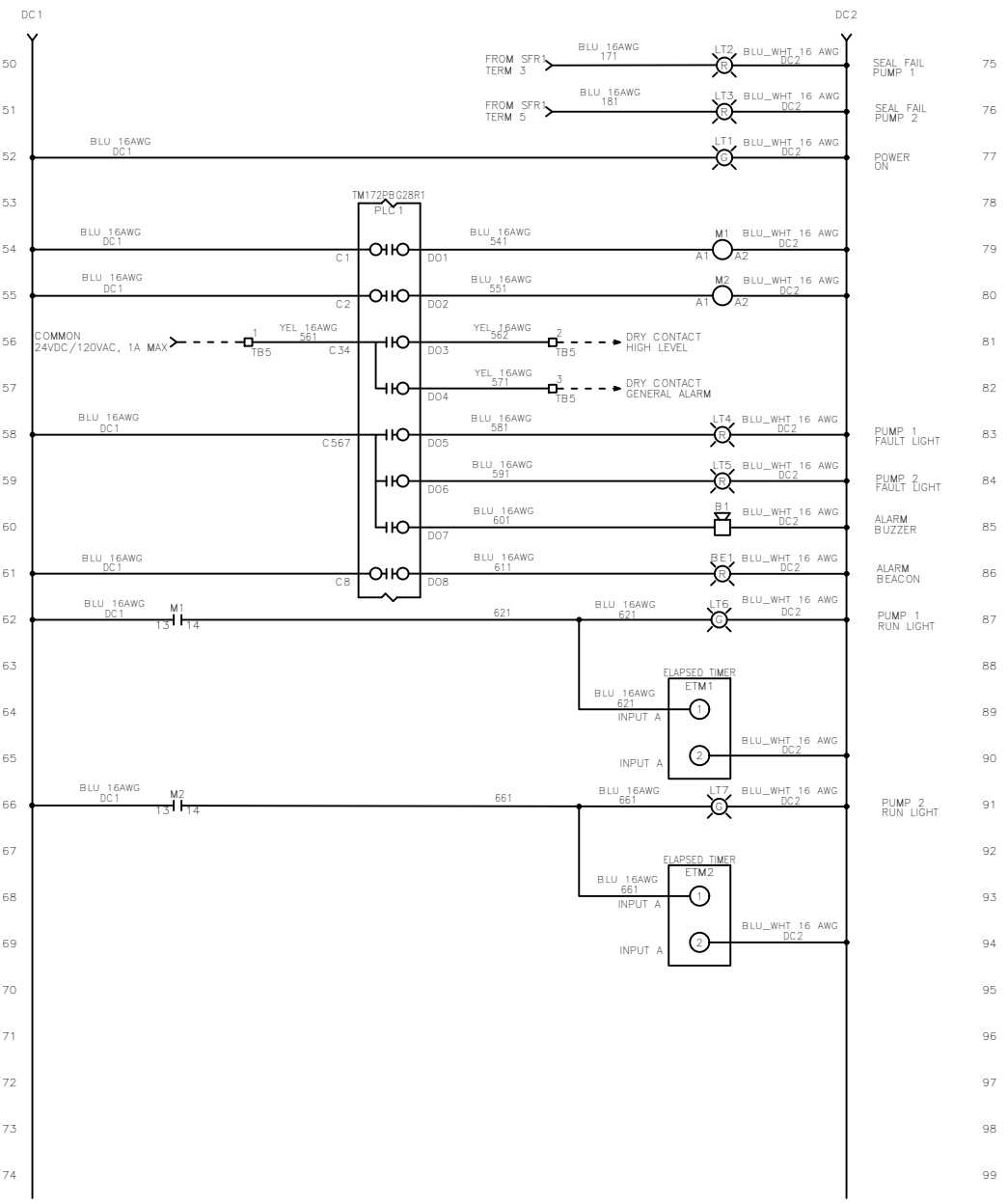


|                          |               |               |        |
|--------------------------|---------------|---------------|--------|
| TITLE: TRD-T32 SCHEMATIC |               |               |        |
| SIZE: B                  | DWG NO.: 1839 | PART NO.:     | REV: B |
| SCALE: NONE              |               | SHEET: 1 OF 2 |        |

FRAME: TRD-T32

REVDATE: 0321

| REVISIONS |     |                            |        |          |
|-----------|-----|----------------------------|--------|----------|
| ZONE      | REV | DESCRIPTION                | DATE   | APPROVED |
|           | B   | UPDATED ETM1 & ETM2 WIRING | 3/4/21 | JED      |



**MULTI-TAP TRANSFORMER:**  
 CONNECT FACTORY TAGGED WIRES TO APPROPRIATE TRANSFORMER VOLTAGE TAP. SEE BELOW FOR CONNECTIONS:  
 FOR 208V OPERATION, CONNECT TO FUSE INPUT HF & TO TRANSFORMER TAP H2.  
 FOR 240V OPERATION, CONNECT TO FUSE INPUT HF & TO TRANSFORMER TAP H3.  
 FOR 480V OPERATION, CONNECT TO FUSE INPUT HF & TO TRANSFORMER TAP H4.

----- DASHED LINE INDICATES FIELD WIRING.  
 USE COPPER CONDUCTORS ONLY.  
 TEMPERATURE RATING OF CONDUCTORS IS TO BE:  
 60°C (140°F) FOR UNDER 100A.  
 75°C (167°F) FOR OVER 100A.  
 BRANCH CIRCUIT PROTECTION SHALL BE PROVIDED BY THE INSTALLER: MUST BE SIZED ACCORDING TO PUMP/MOTOR MANUFACTURING SPECIFICATIONS.  
 VERIFY CORRECT OPERATION OF CONTROL PANEL AFTER INSTALLATION IS COMPLETE.

| FIELD WIRING TORQUE SPECS. |           |
|----------------------------|-----------|
| TERMINAL BLOCK UT 2,5      | 5 IN-LB   |
| TERMINAL BLOCK UT 4        | 7 IN-LB   |
| TERMINAL BLOCK UT 6        | 15 IN-LB  |
| TERMINAL BLOCK UT 10       | 15 IN-LB  |
| TERMINAL BLOCK UT 16       | 25 IN-LB  |
| TERMINAL BLOCK UT 35       | 30 IN-LB  |
| TS1, TS2, J2 & J3 PCB      | 5 IN-LB   |
| TRANSFORMER H1F, H2F & H3F | 15 IN-LB  |
| TRANSFORMER H1, H2 & H3    | 10 IN-LB  |
| DS1 VLS3P16-63 R1          | 16 IN-LB  |
| DS1 VLS3P63-125 R2         | 45 IN-LB  |
| DS1 LK4JU3CN 100A          | 36 IN-LB  |
| DS1 LK4MU3N 200A           | 200 IN-LB |
| M1/ M2 T1, T2 & T3         | 15 IN-LB  |

|                        |                     |                  |         |   |         |
|------------------------|---------------------|------------------|---------|---|---------|
| UL #:                  | E320866             | DRAWN BY:        | JED     | DATE:   | 8/28/20 |
| TOTAL FLA:             | 26 A                | LARGEST MOT. FLA | 12 A    | APPROVED BY:  | KM      |
| VOLTAGE:               | 208/240/480 VAC     | PHASE:           | 3 PH    | DATE:   | 8/28/20 |
| FREQUENCY:             | 60 Hz               | ENCLOSURE TYPE:  | NEMA 3R | THIS DRAWING CONTAINS PROPRIETARY INFORMATION AND SHALL NOT BE USED OR DISCLOSED WITHOUT PRIOR WRITTEN AUTHORIZATION. |         |
| SHORT CIRCUIT CURRENT: | 5KA RMS SYMMETRICAL | 600V MAXIMUM     |         |   |         |



|                          |         |          |         |   |
|--------------------------|---------|----------|---------|---|
| TITLE: TRD-T32 SCHEMATIC |         |          |         |   |
| SIZE                     | DWG NO. | PART NO. | REV     |   |
| B                        | 1839    |          | TRD-T32 | B |
| SCALE                    | NONE    | SHEET    | 2 OF 2  |   |